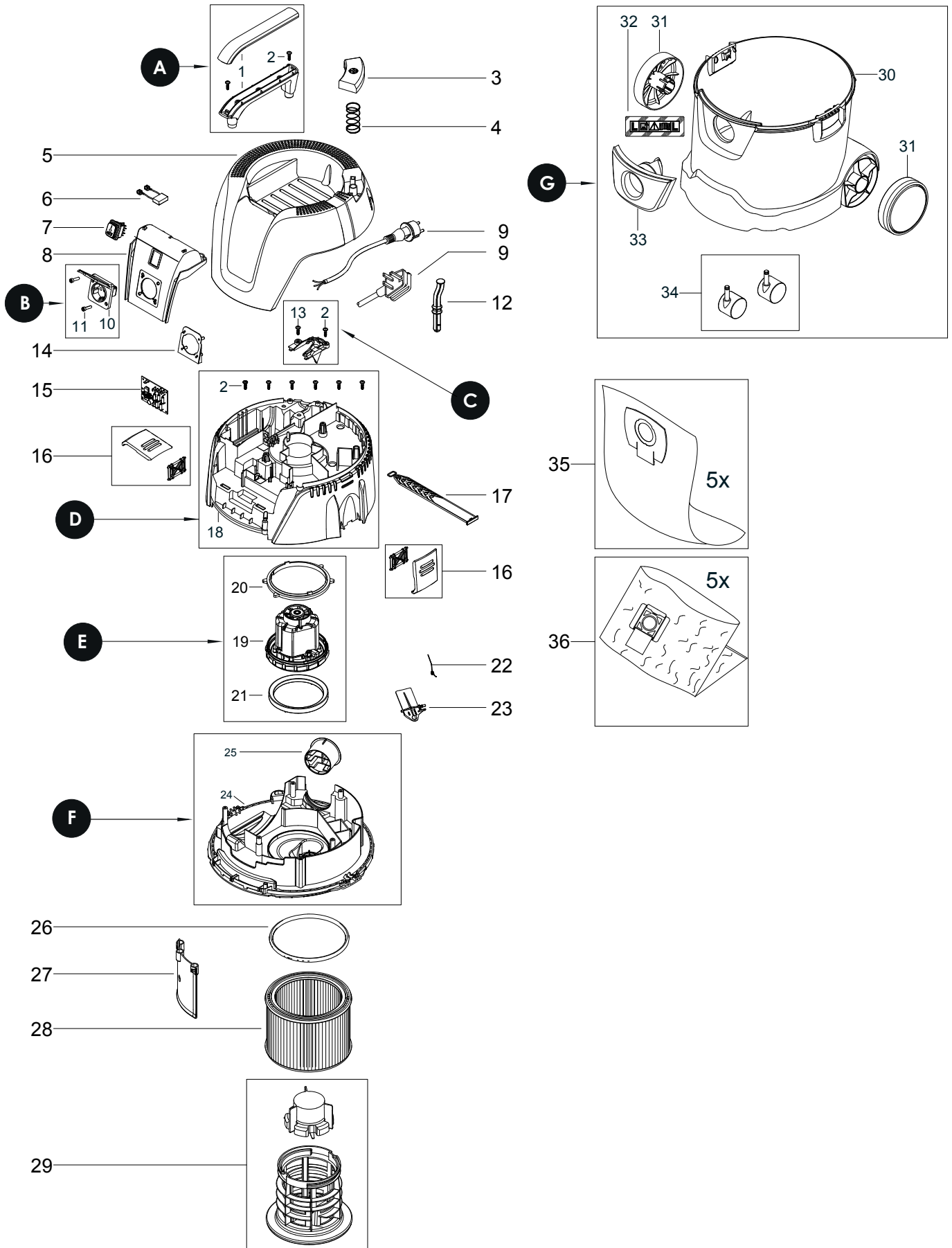


# Exploded view of Dust Extractor 1025 L

Updated 23.05.2019



## Dust Extractor 1025L Spare Part kits

Mirka code	Item	Description	Kit	QTY
8999001111	1	Handle	A	1
	2	Screws 5x18mm		2
<b>8999601911</b>	10	<b>Socket (EU) 16A/250V</b>	B	1
	11	Screws 3,5x18mm		2
8999711011GB	10	Socket (GB) 13A/250V	B	1
	11	Screws 3,5x18mm		2
8999211111	10	Socket (AU/NZ) 10A/250V	B	1
	11	Screws 3,5x18mm		2
8999212811	10	Socket (CN) 10A/250V	B	1
	11	Screws 3,5x18mm		2
8999001311	13	Outlet for Power Cord	C	1
	2	Screws 5x18mm		2
8999001811	18	Clamping Plate	D	1
	2	Screws 5x18mm		6
<b>8999001911</b>	19	<b>Motor Assembly (230V)</b>	E	1
	20	Upper Motor Sealing		1
	21	Lower Motor Sealing		1
8999002411	24	Baseplate with Outlet	F	1
	25	Outlet		1
<b>8999003011</b>		<b>Container kit</b>	G	
	30	Container		1
	31	Wheels 130 mm		2
	32	Label Dust Class L		1
	33	Inlet Fitting		1
	34	Wheels 50mm		2

Separate parts on next page.

## Dust Extractor 1025L Spare Parts

Mirka code	Item	Description	Kit	QTY
	1	Handle	A	1
	2	Screws 5x18mm	A,C,D	2
	3	Push & Clean Button		1
	4	Spring For Push & Clean		1
8999000511	5	Cover		1
8999000611	6	Anti-Interference Capacitor Set		1
<b>8999000711</b>	<b>7</b>	<b>Switch</b>		1
8999000811	8	Switch and Socket Board		1
<b>8999711111</b>	<b>9</b>	<b>Power Cord (EU)</b>		1
<b>8999711211</b>	<b>9</b>	<b>Power Cord 230V (GB)</b>		1
8999041411	9	Power Cord (ANZ)		1
8999241711	9	Power Cord (CN)		1
	10	Socket	B	1
	11	Screws 3,5x18mm	B	2
8999001211	12	Rod for Push & Clean		1
	13	Outlet for Power Cord	C	1
8999001411	14	Plug Socket Plate		1
<b>8999001511</b>	<b>15</b>	<b>Electronic Board 230-240V</b>		1
8999001611	16	Container Clamp		1
<b>8999001711</b>	<b>17</b>	<b>Rubber Strap</b>		1
	18	Clamping Plate	D	1
	19	Motor Assembly (230V)	E	1
	20	Upper Motor Sealing	E	1
	21	Lower Motor Sealing	E	1
<b>8999602211</b>	<b>22</b>	<b>Torsion Spring</b>		1
8999002311	23	Flap		1
	24	Baseplate With Outlet	F	1
	25	Outlet	F	1
8999002611	26	Sealing		1
	27	Deflector Shield		1
<b>8999600411</b>	<b>28</b>	<b>Filter</b>		1
<b>8999602511</b>	<b>29</b>	<b>Filter Support Cage</b>		1
	30	Container	G	1
8999003111	31	Wheel 130 mm	G	1
	32	Label Dust Class L	G	1
8999003311	33	Inlet Fitting	G	1
8999003411	34	Wheels 50mm	G	2
<b>8999000211</b>	<b>35</b>	<b>Dust Bags Fleece</b>		5
	36	Dust Bags Disposal		5